

# BAD CARD BUBBLE

## BAD CARD BUBBLE

PRACTICE PLAYING IN WITH BOTH HANDS

CUT TIME "FAST" FEEL

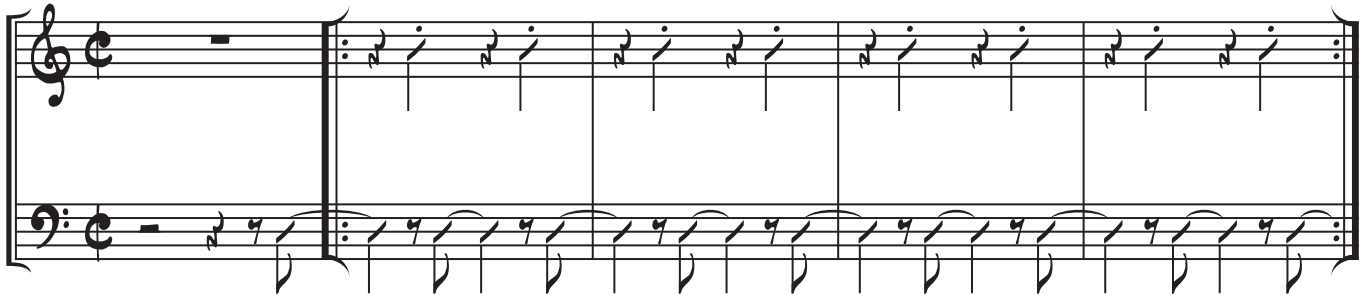


COMMON TIME "SLOW" FEEL

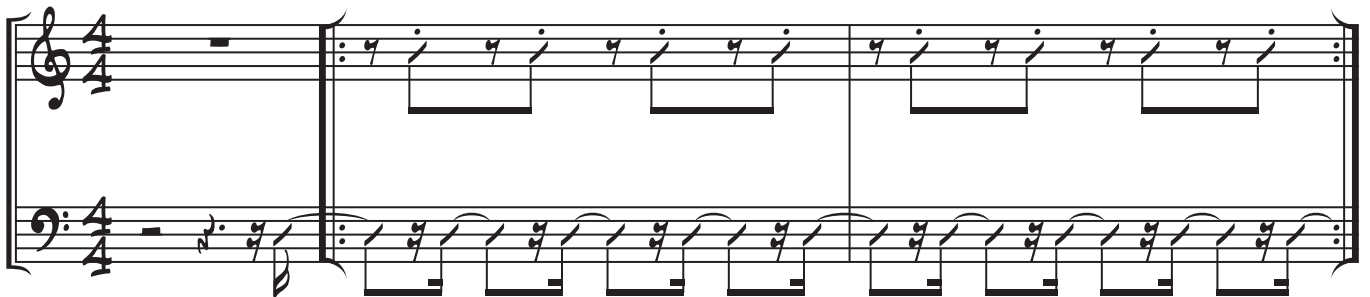


CUT TIME "FAST" FEEL

## BAD CARD BUBBLE WITH RIGHT HAND CHOP



COMMON TIME "SLOW" FEEL



CUT TIME "FAST" FEEL

BAD CARD BUBBLE WITH RIGHT HAND BUBBLE

Musical notation for Cut Time "FAST" FEEL. The piece is in cut time (2/2). The right hand part consists of a series of eighth notes with stems pointing up, grouped in pairs. The left hand part consists of a series of eighth notes with stems pointing down, also grouped in pairs. The notation is presented in a grand staff with treble and bass clefs.

COMMON TIME "SLOW" FEEL

Musical notation for Common Time "SLOW" FEEL. The piece is in common time (4/4). The right hand part consists of a series of quarter notes with stems pointing up, grouped in pairs. The left hand part consists of a series of quarter notes with stems pointing down, also grouped in pairs. The notation is presented in a grand staff with treble and bass clefs.